

I-8770 2-port RS-232/422/485 to Ethernet Data Gateway

I-8771 1-port RS-232/422/485 to Ethernet Data Gateway



INTRODUCTIONS

The I-8770/8771 is a swift and cost-effective data gateway between RS-232/422/485 and Ethernet interfaces. This unit immediately upgrades your existing device(s) to the Ethernet world. The I-8770/8771 is specially designed for remote controlling and monitoring devices via the Internet.

The I-8770/8771 provides one or two RS-232/422/485 serial ports, and each of them can be easily configured per your needs. The I-8770/8771 also supports transmission speeds of up to 230 Kbps, meeting the up-to-date demand for high-speed transmission. Users can implement a Windows utility to configure the I-8770/8771 without further programming.

The I-8770/8771 protects your current hardware investment and ensures your network expandability. Since the protocol conversion is transparent, all existing devices can be seamlessly integrated into the Ethernet network. Therefore, the I-8770/8771 can be used in security systems, factory automation, SCADA, transportation, and more.

The I-8770/8771 integrates both your existing human-machine interface software (HMI) and RS-232/422/485 system architecture with an Ethernet network. It helps you save cabling space and the developing cost of software.

The I-8770/8771 also provides a high-performance RISC CPU and real time operating system to reduce CPU load. These components make the I-8770/8771 more stable and reliable. Another benefit is the I-8770/8771 allows users to remotely download programs into a destination device via Ethernet. This reduces the need for on-site maintenance and diagnosis. In addition, the I-8770/8771 comes with the Windows configuration and port-mapping utility. This configuration tool can automatically detect all Ethernet Data Gateway products on a local network and can easily adjust all settings. The port mapping utility can set up COM ports in the Windows® 95/98/NT/2000/XP platform and can manage all ports you need.

FEATURES

- ▶ Supports 10/100Mbps Base-T Ethernet
- ▶ Supports high transmissions speeds up to 230Kbps
- ▶ Supports an advanced security mechanism to avoid unauthorized access
- ▶ Auto-reconnect
- ▶ Remote download firmware
- ▶ Auto-detecting
- ▶ Easy-managing Port Mapping Utility
- ▶ Supports Windows® 98/NT/2000/XP drivers
- ▶ Surge protection for RS-485 line and power supply
- ▶ Automatic RS-485 data flow control

Auto-reconnect

Sometimes, the system may crash because the I-8770/8771 is interrupted or powered off by accident. However, the I-8770/8771 can solve this problem with its "Auto-reconnect" feature. If the power accidentally turns off, the driver will automatically try to reconnect the I-8770/8771. When the I-8770/8771 recovers or is powered back on, the host PC can send commands to the I-8770/8771 again. This function enhances the reliability of the system.

Auto-detecting Ethernet Data Gateway Product

The configuration utility can automatically search for all the Ethernet Data Gateway devices on the network and configure them according to the current network status, saving your time to acquire the status information.

Easily Diagnose the Communication Situation

The RS-232 serial port can implement an internal test and show you a successful or fail outcome when the test is done. If this test is selected, an external test will also be done to check whether the connection signals of each port is working properly or not. As for the external test, you will need to connect each port to a loopback tester. There are two sections for the test: Signal test and Communication Parameters test. If the results come out OK, the communication quality between the host PC and I-8770/ 8771 is fine.

Easy to Maintain by Remote Downloading Firmware

AXIOMTEK continually upgrades I-8770/8771 firmware keeping you in pace with the most up-to-date developments. You can utilize the download function, located on the Port Mapping Utility, to carry out the upgrading procedure. Please access AXIOMTEK's website to download required computer files, and then follow the instructions.

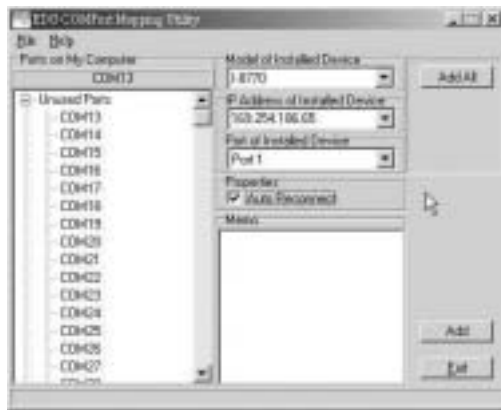
I-8770 / I-8771

SPECIFICATIONS

Protocol	TCP/IP
Network	10/100 Base-T Ethernet
Port	1/2 independent RS-232/422/485 ports
Connector	Network: RJ-45 Serial: RJ-48
Transmission Speed	50bps to 230Kbps
Parity bit	Odd, even, none, space, mark
Data bit	5, 6, 7, 8
Stop bit	1, 1.5, 2
Diagnostic LEDs	Network: Tx/Rx, link, speed (10/100Mbps), power Serial: Tx/Rx, Status
Surge Protection	15KV _{ESD} (RS-232/422/485)
Utility Software	Auto-detecting configuration utility Port mapping utility
Driver Support	Windows® 98/NT/2000/XP
Power Requirements	Unregulated 10 to 30V _{DC}
Power Consumption	4 watt
Mounting	DIN-rail, panel mounting, piggyback stack
Accessories	DIN-rail, Panel mounting, piggyback stack
Operating Temp.	0 to 60°C (32 to 140°F)
Storage Temp.	-20 to 80°C (-4 to 176°F)
Operating Humidity	20 to 95% (non-condensing)
Storage Humidity	0 to 95% (non-condensing)

ORDERING INFORMATION

I-8770	2-port RS-232/422/485 to Ethernet data gateway (includes RJ-48 to DB-9 cable, 1M)
I-8771	1-port RS-232/422/485 to Ethernet data (includes RJ-48 to DB-9 cable, 1M) gateway



► Configuration Utility



► Port Mapping Utility