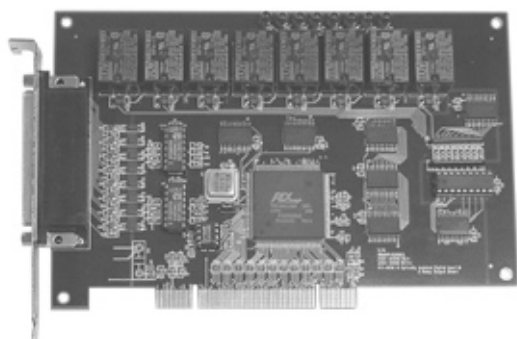


# VTC66525

8 Isolated D/I and 8 Relay Output Card



## Specifications

Isolated Digital Input	
Channels	8
Optical isolated	2500V <sub>DC</sub>
Photo-coupler	PC-3H4
Photo-isolator response time	20µs
Over-voltage protect	50 V <sub>DC</sub>
Input voltage	V <sub>IH</sub> (max.): 36V <sub>DC</sub> V <sub>IH</sub> (min.): 4V <sub>DC</sub> V <sub>IL</sub> (max.): 3V <sub>DC</sub> Low Logic: 0-3V <sub>DC</sub> High Logic: 4-36V <sub>DC</sub> AC 50Hz-3.5KHz
Input current	10 V <sub>DC</sub> 2.9mA (typical) 12 V <sub>DC</sub> 3.6mA (typical) 24 V <sub>DC</sub> 7.5mA (typical) 36 V <sub>DC</sub> 11.5mA (typical)
Relay Output	
Output channels	8
Relay type	4 SPDT & 4 SPST
Rating (resistive)	10 A @120 V <sub>AC</sub> , 6 A @ 250 V <sub>AC</sub> , 5 A @ 30 V <sub>DC</sub>
Relay on/off time	10ms typical
Max. switching power	62.5VA, 60W
Max. switching voltage	250V <sub>AC</sub> , 220V <sub>DC</sub>
Breakdown voltage	750 V <sub>rms</sub> (1 sec)
Operate time	5ms
Release time	4ms
Life expectancy	10,000,000 operations
General Environment	
I/O connector	37-pin D-Sub type female
Power consumption	+5 V @ 200 mA (typical) +5 V @ 750 mA (max.)
Operation temperature	0 ~ 60°C
Storage temperature	-20 ~ 70°C
Humidity	0 to 90% non-condensing
Dimensions	185mm x 122mm

## Ordering Information

DASP-52016	8 isolated D/I and 8 relay output card
Terminal Board	
TB-88037	37-pin D-sub female wiring terminal board with DIN-rail mounting
Cable	
CB-89037-2	37-Pin D-sub male to male 2M cable

## Features

- ▶ 8 optically isolated digital input channels
- ▶ 4 SPDT & 4 SPST relay output channels
- ▶ On board relay status LED indicator
- ▶ AC/DC polarity-free isolated input
- ▶ Output status read-back
- ▶ Optical isolation on input channels (2500V<sub>DC</sub>) and over-voltage protection (50V<sub>DC</sub>)
- ▶ Serial number on EEPROM supported
- ▶ Windows® 98/NT/2000/XP and Labview 6.0/7.0 driver supported
- ▶ Complete sample program- VB, VC, BCB, Delphi

## Introduction

The DASP-52016 is a PCI-bus, eight isolated D/I and eight relay output card. It supports not only optical isolation (2500V<sub>DC</sub>) but over-voltage protection (50V<sub>DC</sub>) to enhance the reliability of the system. The DASP-52016 also supports two types of relay actuator- SPDT & SPST, making it suitable for controls and sensing applications such as load switching, external switching detection, and contact closure.

### Board Identification- Serial Number on EEPROM

The DASP stores the serial number of each DASP in the EEPROM before shipping. The PCI scan utility can scan all the DASP and show users the serial number of each DASP, helping the user to easily identify and access each card during hardware configuration and software programming.

## Applications

- ON/OFF control
- Test automation
- Power switching
- Security control
- Energy management
- Laboratory automation

## Pin Assignment

NO_0	1	NO_3	20
COM_0	2	COM_3	21
NC_0	3	NC_3	22
NO_1	4	NO_4	23
COM_1	5	COM_4	24
NC_1	6	NO_5	25
NC_2	7	COM_5	26
COM_2	8	NO_6	27
NC_2	9	COM_6	28
NO_7	10	GND	29
COM_7	11	DIL_0	30
DIH_0	12	DIL_1	31
DIH_1	13	DIL_2	32
DIH_2	14	DIL_3	33
DIH_3	15	DIL_4	34
DIH_4	16	DIL_5	35
DIH_5	17	DIL_6	36
DIH_6	18	DIL_7	37
DIH_7	19		